

Description: Guide to configuring and connecting to DataWorX32
OS Requirement: Win 2000, XP Pro, Server 2003, Vista, Server 2008, Windows 7
General Requirement: N/A

Introduction

DataWorX32 allows you to manage SCADA/HMI application data in a centralized configuration. Due to the bridging, tunneling and aggregation functionality, DataWorX32 acts as both an OPC client and an OPC server. DataWorX32 provides an easy way to perform OPC Data Bridging, OPC Aggregation, OPC Redundancy, OPC Aliasing, OPC Tunneling and even acts as a global OPC Expressions container.

Once you have configured DataWorX32, you can use it as the OPC server to access data. This document will walk you through the steps of configuring a register in DataWorX32.

Configuring an OPC Input Data Register

1. Start the DataWorX32 Configurator by going to Start → Programs → ICONICS GENESIS32 → DataWorX32 → DataWorX32
2. Create a new configuration database by going to File → New.
3. Give your configuration database a name and save it.
4. Right-click on Address Space and select New → Register.
5. Specify a name for the register.

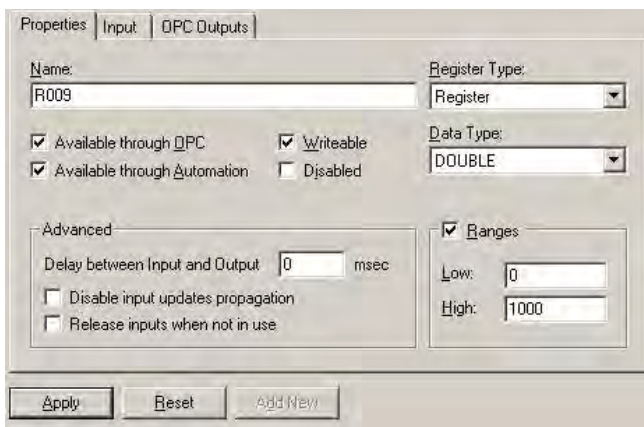


Figure 1 - Adding DataWorX32 Register

6. Click on the Input tab and select OPC Point if it is not already selected.

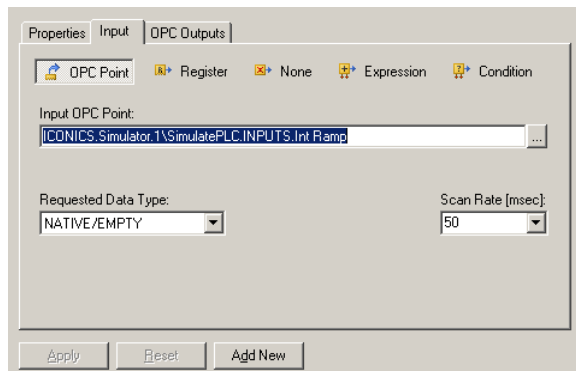





Figure 2 - Register Input

7. Click on the “Browse”  button to bring up the Unified Data Browser.
8. Select your OPC tag in the Unified Data Browser and click “OK”
9. Click on “Apply” in the DataWorX32 Configurator.
10. Start the DataWorX32 server by clicking on the “Runtime”  button.
11. Click on the “Monitor View”  button to bring up the monitor screen.
12. Check the Register that you have just created and see the data being updated in the monitor view window.

Item ID	Value	Timestamp	Quality	Subquality	Limit
<input type="checkbox"/> Alias1	NA	NA	NA	NA	NA
<input type="checkbox"/> BoilerSelector	NA	NA	NA	NA	NA
<input type="checkbox"/> Redundancy	NA	NA	NA	NA	NA
<input type="checkbox"/> Redundancy_primary	NA	NA	NA	NA	NA
<input checked="" type="checkbox"/> Register1	60 (VT_R8)	05/15/06 16:24:07.337	Good	Non-specific	Not Limited
<input type="checkbox"/> Register2	NA	NA	NA	NA	NA
<input type="checkbox"/> SwitchBoilers	NA	NA	NA	NA	NA

Figure 3 - Monitor View

13. You can also view this tag in GraphWorX32.
14. Insert a process point in GraphWorX32 and browse to ICONICS.DataWorX32.8 server and select the Register.
15. Go into runtime and you should see your tag with values.

Configuring an Aggregation Register

Here we will create a register that can be used for aggregation, where both the input and the output are the same.

1. Right-click on Address Space and select New → Register.
2. Specify a name for the register.
3. Be sure to check “Disable input updates propagation” so that when the input changes, it doesn’t get written to the output as we will have the same tag in the input and output.

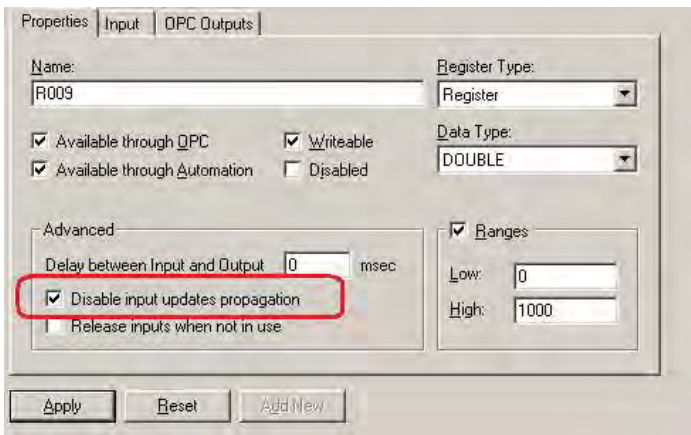


Figure 4 - Adding DataWorX32 Register

- Click on the Input tab and select OPC Point if it is not already selected.

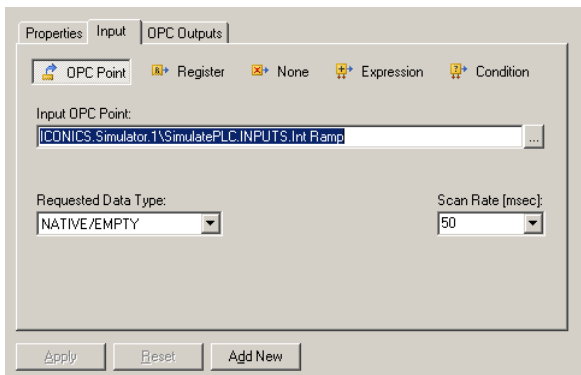



Figure 5 - Register Input

- Click on the “Browse”  button to bring up the Unified Data Browser.
- Select your OPC tag in the Unified Data Browser and click “OK”
- Click on the “OPC Outputs” tab now and then click on “Add OPC Outputs...” to add the same tag to the output of the register.

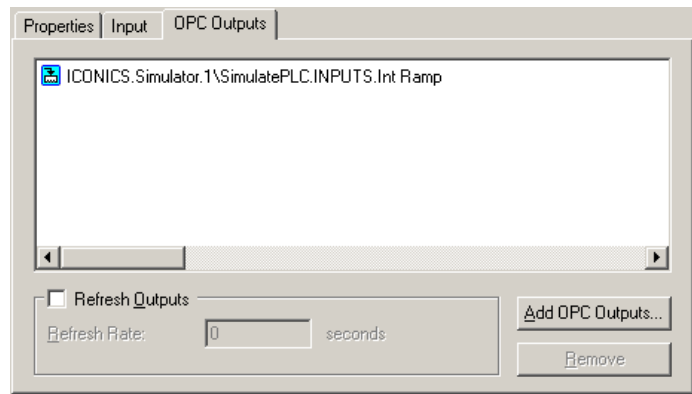




Figure 7 – Register Output

- Click on “Apply” in the DataWorX32 Configurator.
- Start the DataWorX32 server by clicking on the “Runtime”  button.
- Click on the “Monitor View”  button to bring up the monitor screen.
- Check the Register that you have just created and see the data being updated in the monitor view window.

Item ID	Value	Timestamp	Quality	Subquality	Limit
<input type="checkbox"/> Alias1	NA	NA	NA	NA	NA
<input type="checkbox"/> BoilerSelector	NA	NA	NA	NA	NA
<input type="checkbox"/> Redundancy	NA	NA	NA	NA	NA
<input type="checkbox"/> Redundancy_isprimary	NA	NA	NA	NA	NA
<input checked="" type="checkbox"/> Register1	60 (VT_R8)	05/15/06 16:24:07.337	Good	Non-specific	Not Limited
<input type="checkbox"/> Register2	NA	NA	NA	NA	NA
<input type="checkbox"/> SwitchBoilers	NA	NA	NA	NA	NA

Figure 8 - Monitor View

- You can also view this tag in GraphWorX32.
- Insert a process point in GraphWorX32 and browse to ICONICS.DataWorX32.8 server and select the Register.
- Go into runtime and you should see your tag with values.